

TATOUAGE DESIGNS
LEMON TREE - INSTRUCTIONAL INSERT

The completed Lemon Tree will measure 34" w x 48.5" h. Prior to placing any Tatouage on the wall, make sure to measure your intended space. **Please remember to keep the protective backing on ALL sheets until they are ready to be applied to the wall.**

1. Place sheet labeled **Base #1** (Fig. A) on the wall. Make sure your sheet is level before removing protective backing and placing on wall.



Fig. A

2. Sheet labeled **Lower Body #2** (Fig. B) will go up next on top of sheet #1.



Fig. B

3. Sheet labeled **Upper Body #3** (Fig C) will be placed on top of sheet #2.

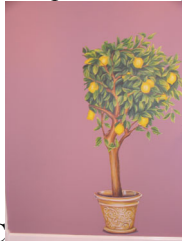


Fig. C

4. Sheet labeled **Left Body #4** (Fig. D) will be placed to the Left of sheets #2 & #3.



Fig. D

5. Sheet labeled **#5 Extra Leaves** (Fig. E) will be placed on top of sheet #4 & #3 where you will see that it fits in place where there is a spot without leaves. This step will complete the Lemon Tree.



Fig. E