

**TATOUAGE DESIGNS**  
**DOOR - INSTRUCTIONAL INSERT (For use with ALL door designs)**

The completed Door (with Step) will measure 36" w x 75" h. Before placing any Tatouage on the wall, make sure to measure your intended space. **Please remember to keep the protective backing on ALL sheets until they are ready to be applied to the wall.**

1. Place Left Step #1 Sheet (see Fig. A) on the wall first. The right side of this step will be the center of your door. Be sure to align the right edge of this sheet on your wall where you want the middle of your door to be. Be sure sheet is level before removing protective backing and placing on wall. Place Sheet #2 Right Step (see Fig. B) up next. The left edge of Step Sheet #2 will line up with the right edge of Step Sheet #1.



Fig. A



Fig. B

2. Door Sheet #1 will go up next (see Fig. C). Sheet #1 will go on top of the Left Step and the bottom left corner of sheet #1 should match up with the top left corner of Step Sheet #1. Be sure to level this sheet prior to applying to the wall. Followed by Sheet #2 placed to the right of door sheet #1 (see Fig. D) and then Sheet #3 (see Fig. E)



Fig. C



Fig. D



Fig. E

3. Sheet #4 of the door (see Fig. F) will go up next. This sheet will be placed on top of Sheet #1. Please level this sheet prior to applying to the wall. This will be followed by Sheet #5 (see Fig. G) and then Sheet #6 (see Fig. H).



Fig. F



Fig. G



Fig. H

4. Sheet #7 (see Fig. I) will go up next; this sheet will be placed on top of Sheet #4. Please be sure to level this sheet prior to applying to the wall. Followed by Sheet #8 (see Fig. J) and then Sheet #9 (see Fig. K).



Fig. I

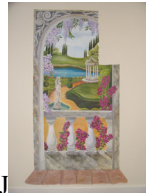


Fig. J



Fig. K

