

## **COUNTRY COTTAGE WINDOW**

WHEN COMPLETELY PUT UP: APPROXIMATE TOTAL SIZE 42" WIDE X 44" TALL INCLUDING THE CRACK BELOW THE LEDGE



**LEAVE THE PROTECTIVE BACKING ON THE DESIGN UNTIL YOU ARE READY TO PLACE IT ON THE WALL!**

1. Cut out all of the pieces that have a dotted line, make sure to leave protective backing on. On the window ledge and bottom window sill sheet, cut the window sill (small piece) off of the sheet.
2. Using the measurements above, measure 11 inches above where you want to the design end at the bottom. This is where you will place the ledge (use a level if you have one).
3. Take the left window curtain and line it up with the left edge of the ledge. If you have a level, use it to ensure the curtain is straight. See fig. 1
4. Take the center of the window curtain and place it together with the left window curtain, you will notice it fits like a puzzle.
5. Take the right window curtain and place it together with the center of the window curtain, and try to line it up at the bottom near the ledge. IF there is a space it's ok, you can always place other objects (i.e., basket, ivy, etc.) over any gaps.
6. Take the bottom of the window sill and place it into place.
7. Take the left shutter and attach the hinge to the end of the window. Make sure that there is the same amount of space at the top and bottom. See fig. 2. Do the same with the right shutter.
8. Using the sheets that have the brick wall pieces and the pieces that looked cracked, line up the largest one along the right side of the bottom of the ledge. See fig. 3
9. Using the two pieces that are slightly curved, place them above the window in the spots that already look distressed. See Fig. 4.
10. Place the last piece of cracked brick to the wall anywhere you feel would look appropriate.
11. If you wish, place the basket and potted geranium on the window sill. For an added look you may place flowers or other Tatouage Designs in the basket or on the window sill.
12. Cut up the English Ivy sheets. Place these around the window looking as they are growing up the wall. Make them look like they are going behind the shutters and coming out the top to add realism to your mural.



Fig. 1



Fig. 2



Fig. 3

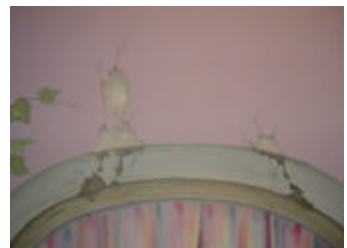


Fig. 4